



SAU #95
Windham, NH

2022-23 Enrollment Projection Report
Spring Update

Table of Contents

Section	Page
Enrollment Summary Spring Update.....	1
Historical Enrollment Table Spring Update.....	2
Projected Enrollment Table Spring Update.....	3
Historical & Projected Enrollment in Grade Combinations	4
October 2022 vs. Spring 2023 Enrollment by Grade.....	5
Projections October 2022 vs. Spring 2023.....	6
Reliability and Use of this Document	7

Enrollment Summary Spring Update

The global pandemic continues to influence our nation's public health and economic stability in unpredictable ways. As such, it is still too early to identify many of the factors that could impact school enrollments. Over the past school year, we have seen fluctuations in the real estate market and job trends, which have impacted student attendance patterns. Moreover, during the past school year, we have seen how school enrollment patterns can differ substantially from one district to another, with some districts losing students while others experience an influx of students.

We are pleased to send you this report displaying the past, present, and projected enrollments for the District. These ten-year projections are designed to provide the District with yearly, up-to-date enrollment information that can be used by boards and administrators for effective planning and allocation of resources. Included in this report are graphs representing historical and projected grade-by-grade enrollments, as well as historical and projected enrollments in grade combinations. We have received the figures given to us by the District, and we assume that the method of collecting the enrollment data has been consistent from year to year.

Enrollment projections are more reliable in Years #1-4 in the future and less reliable in the "out-years." Projections six to ten years out may serve as a guide to future enrollments and are useful for planning purposes. For more information, please refer to the Reliability and Use of This Document section.

We are pleased to send you this Spring Update.

We have reviewed the updated Spring Enrollment and note that the enrollment growth is similar to the previous projection for Grades K-12. We look forward to fully updating data in the Fall of 2023.

Historical Enrollment Spring Update

School District: SAU #95 -Windham, NH - Spring Update

3/17/2023

NOTE: Spring enrollment data provided by the District.

Historical Enrollment By Grade																			
Birth Year	Births*	School Year	PK	K	1	2	3	4	5	6	7	8	9	10	11	12	UNGR	K-12	PK-12
2007	137	2012-13	12	187	226	242	234	223	257	220	214	210	216	198	171	173	0	2771	2783
2008	133	2013-14	10	169	242	230	246	238	231	243	222	219	212	195	199	170	0	2816	2826
2009	112	2014-15	19	145	201	247	234	252	244	237	245	219	220	205	194	195	0	2838	2857
2010	124	2015-16	40	131	185	215	251	237	253	247	238	249	227	227	197	200	0	2857	2897
2011	126	2016-17	60	150	177	193	227	250	244	257	260	243	254	227	221	204	0	2907	2967
2012	107	2017-18	63	141	186	190	197	235	251	250	266	260	234	246	214	224	0	2894	2957
2013	106	2018-19	61	133	196	192	202	201	247	261	258	266	255	225	243	222	< 10 **	2902	2963
2014	142	2019-20	65	181	182	205	194	211	201	252	264	261	272	243	226	246	< 10 **	2939	3004
2015	125	2020-21	44	185	194	194	203	191	212	203	248	261	266	269	254	231	0	2911	2955
2016	122	2021-22	57	193	222	204	202	215	203	221	200	252	269	269	266	251	< 10 **	2970	3027
2017	122	Fall 2022	63	191	207	231	206	204	218	201	227	211	251	261	273	271	< 10 **	2953	3016
2023 Spring Update			75	191	213	235	207	207	222	201	231	216	252	260	272	270	< 10 **	2978	3053

*Birth data provided by Public Health Vital Records Departments in each state.

** < 10 Not reported, to protect subgroups with fewer than 10 students.

Historical Enrollment in Grade Combinations									
Year	K-4	PK-4	5-6	7-8	K-8	PK-8	5-8	7-12	9-12
2012-13	1112	1124	477	424	2013	2025	901	1182	758
2013-14	1125	1135	474	441	2040	2050	915	1217	776
2014-15	1079	1098	481	464	2024	2043	945	1278	814
2015-16	1019	1059	500	487	2006	2046	987	1338	851
2016-17	997	1057	501	503	2001	2061	1004	1409	906
2017-18	949	1012	501	526	1976	2039	1027	1444	918
2018-19	924	985	508	524	1956	2017	1032	1469	945
2019-20	973	1038	453	525	1951	2016	978	1512	987
2020-21	967	1011	415	509	1891	1935	924	1529	1020
2021-22	1036	1093	424	452	1912	1969	876	1507	1055
Fall 2022	1039	1102	419	438	1896	1959	857	1494	1056
Spring 2023	1053	1128	423	447	1923	1998	870	1501	1054

Historical Percentage Changes			
Year	K-12	Diff.	%
2012-13	2771	0	0.0%
2013-14	2816	45	1.6%
2014-15	2838	22	0.8%
2015-16	2857	19	0.7%
2016-17	2907	50	1.8%
2017-18	2894	-13	-0.4%
2018-19	2902	8	0.3%
2019-20	2939	37	1.3%
2020-21	2911	-28	-1.0%
2021-22	2970	59	2.0%
Fall 2022	2953	-17	-0.6%
Change	182	6.6%	

Projected Enrollment Spring Update

School District: SAU #95 -Windham, NH - Spring Update

3/17/2023

Note: Spring projections are based on updated Spring enrollment data.

Enrollment Projections By Grade*																				
Birth Year	Births*		School Year	PK	K	1	2	3	4	5	6	7	8	9	10	11	12	UNGR	K-12	PK-12
2017	122		Spring 2023	75	191	213	235	207	207	222	201	231	216	252	260	272	270	1	2978	3053
2018	126		2023-24	63	194	215	224	238	212	214	225	202	238	219	248	264	275	1	2969	3032
2019	134		2024-25	64	207	218	226	227	244	219	217	226	208	242	216	252	267	1	2970	3034
2020	119		2025-26	64	184	233	229	229	233	252	222	218	232	211	238	220	254	1	2956	3020
2021	136		2026-27	65	210	207	245	232	235	241	256	223	224	236	208	242	222	1	2982	3047
2022	127	(est.)	2027-28	65	197	236	218	248	238	243	244	257	229	227	232	211	244	1	3025	3090
2023	128	(est.)	2028-29	66	198	222	248	221	254	246	246	245	264	232	224	236	213	1	3050	3116
2024	129	(est.)	2029-30	66	199	223	234	251	227	262	249	247	252	268	229	228	238	1	3108	3174
2025	128	(est.)	2030-31	67	197	224	235	237	257	235	266	250	254	256	264	233	230	1	3139	3206
2026	130	(est.)	2031-32	67	200	222	236	238	243	266	238	267	257	258	252	268	235	1	3181	3248
2027	129	(est.)	2032-33	68	198	225	234	239	244	251	270	239	275	261	254	256	271	1	3218	3286

Note: Ungraded students (UNGR) often are high school students whose anticipated years of graduation are unknown, or students with special needs - UNGR not included in Grade Combinations for 7-12, 9-12, etc.

Based on an estimate of births

Based on children already born

Based on students already enrolled

*Birth data provided by Public Health Vital Records Departments in each state.

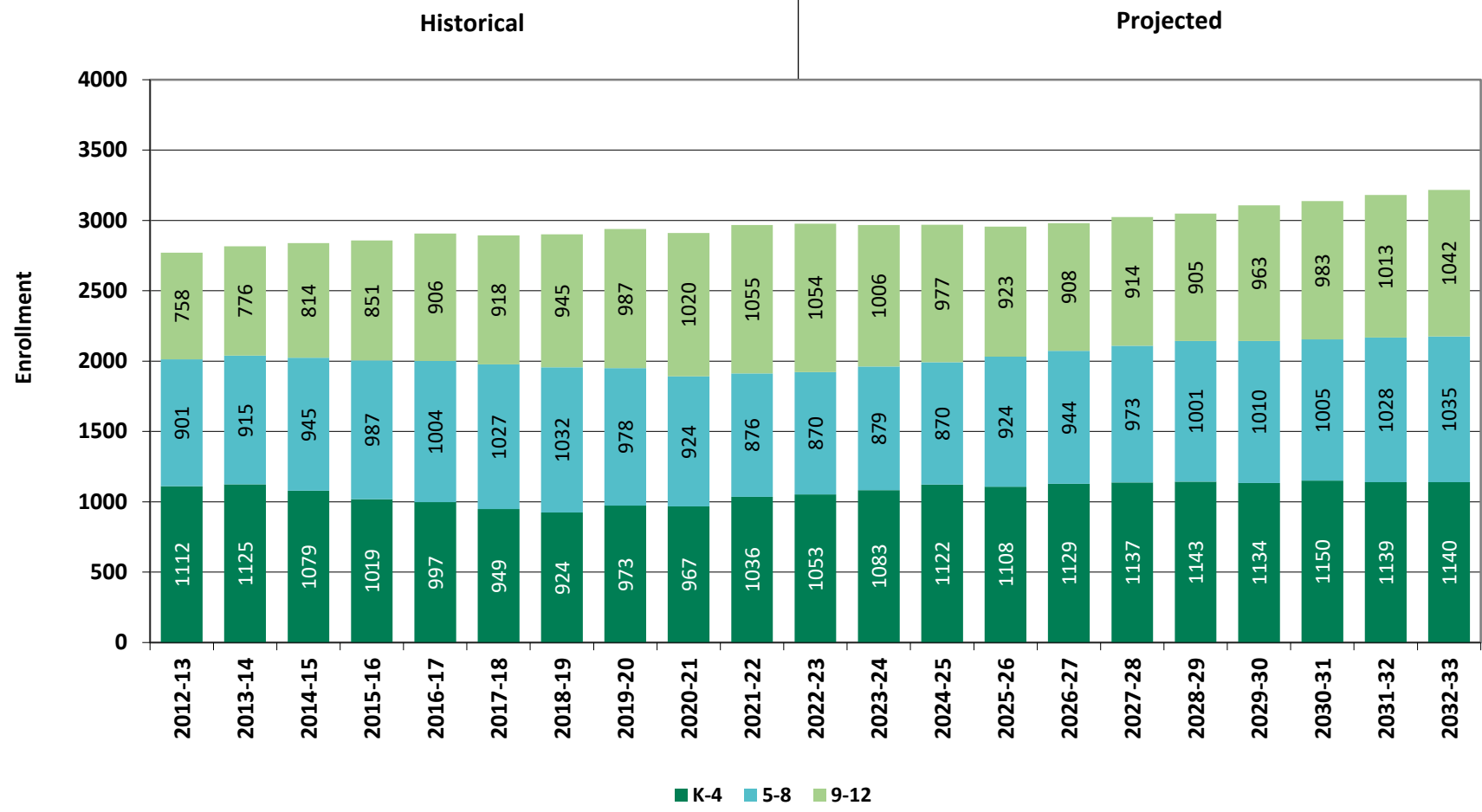
** < 10 Not reported, to protect subgroups with fewer than 10 students.

Projected Enrollment in Grade Combinations*									
Year	K-4	PK-4	5-6	7-8	K-8	PK-8	5-8	7-12	9-12
Spring 2023	1053	1128	423	447	1923	1998	870	1501	1054
2023-24	1083	1146	439	440	1962	2025	879	1446	1006
2024-25	1122	1186	436	434	1992	2056	870	1411	977
2025-26	1108	1172	474	450	2032	2096	924	1373	923
2026-27	1129	1194	497	447	2073	2138	944	1355	908
2027-28	1137	1202	487	486	2110	2175	973	1400	914
2028-29	1143	1209	492	509	2144	2210	1001	1414	905
2029-30	1134	1200	511	499	2144	2210	1010	1462	963
2030-31	1150	1217	501	504	2155	2222	1005	1487	983
2031-32	1139	1206	504	524	2167	2234	1028	1537	1013
2032-33	1140	1208	521	514	2175	2243	1035	1556	1042

Projected Percentage Changes			
Year	K-12	Diff.	%
Spring 2023	2978	0	0.0%
2023-24	2969	-9	-0.3%
2024-25	2970	1	0.0%
2025-26	2956	-14	-0.5%
2026-27	2982	26	0.9%
2027-28	3025	43	1.4%
2028-29	3050	25	0.8%
2029-30	3108	58	1.9%
2030-31	3139	31	1.0%
2031-32	3181	42	1.3%
2032-33	3218	37	1.2%
Change	240		8.1%

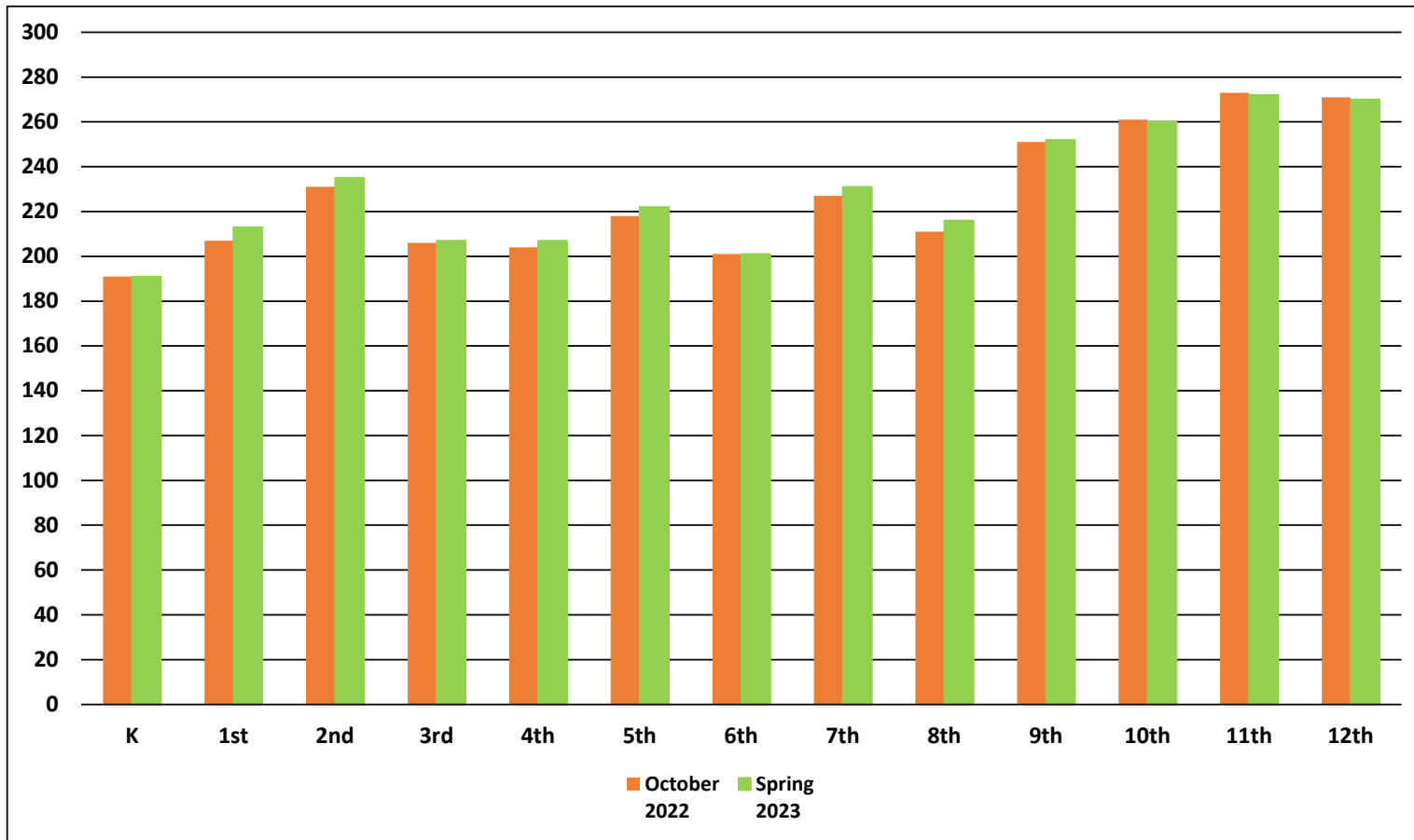
*Projections should be updated annually to reflect changes in in/out-migration of families, real estate sales, residential construction, births, and similar factors.

Historical & Projected Enrollments in Grade Combinations

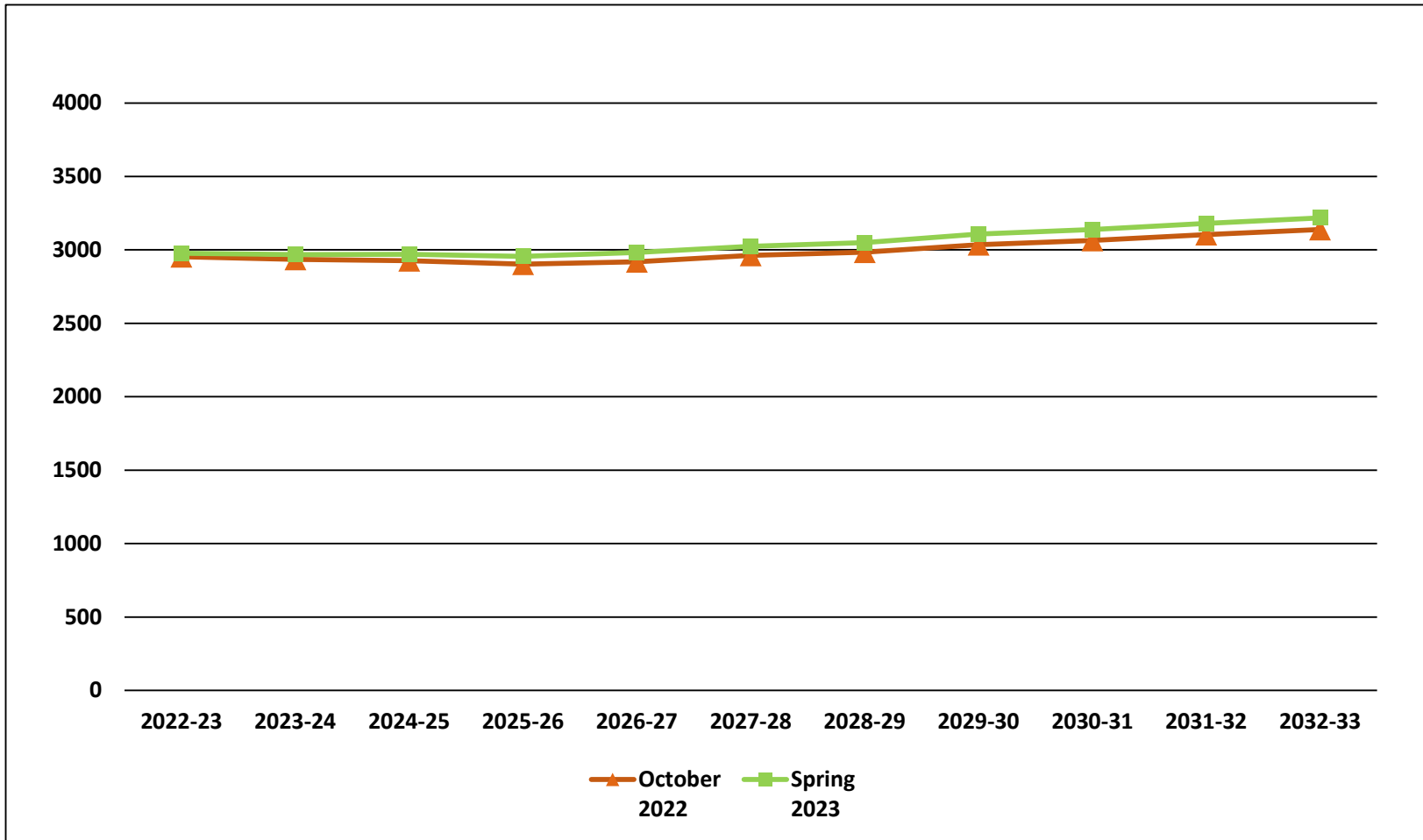


Note: Projections are based on Spring 2023 data.

October 2022 vs. Spring 2023 Enrollment by Grade



Projections October 2022 vs. Spring 2023



Reliability and Use of this Document

PROJECTION METHODOLOGY

Cohort component (survival) technique is a frequently used method of preparing enrollment forecasts. NESDEC uses this method, but modifies it in order to move away from forecasts that are wholly computer- or formula-driven. Such modification permits the incorporation of important, current district-specific information into the generation of enrollment forecasts (such as in/out-migration of students, resident births, HUD-reported building permits, etc.). Percentages are calculated from the historical enrollment data to determine a reliable percentage of increase or decrease in enrollment between any two grades. For example, if 100 students enrolled in Grade 1 in 2018-19 increased to 104 students in Grade 2 in 2019-20, the percentage of survival would be 104%, or a ratio of 1.04. Ratios are calculated between each pair of grades or years in school over several recent years.

After study and analysis of the historical ratios, and based upon a reasonable set of assumptions regarding births, migration rates, retention rates, etc., ratios most indicative of future growth patterns are determined for each pair of grades. The ratios thus selected are applied to the present enrollment statistics to project into future years. The ratios are the key factors in the reliability of the projections, assuming validity of the data at the starting point.

RELIABILITY OF ENROLLMENT PROJECTIONS

Projections can serve as useful guides to school administrators for educational planning. Enrollment projections are more reliable in Years #1-4 in the future and less reliable in the "out-years." Projections six to ten years out may serve as a guide to future enrollments and are useful for planning purposes, but they should be viewed as subject to change given the likelihood of potential shifts in underlying assumptions/trends, such as student migration, births as they relate to Kindergarten enrollment, and other factors.

Projections that are based upon **the children who already are in the district** (the current K-12 population only) will be the most reliable. The second level of reliability will be for those children already **born into the community but not yet old enough to be in school**. The least reliable category is the group for which an estimate must be made **to predict the number of births**, thereby adding additional uncertainty. See these three multi-colored groupings on the "Projected Enrollment" tab.

Annual updates allow for early identification of recent changes in historical trends. When the actual enrollment in a grade is significantly different (higher or lower) from the projected number, it is important (yet difficult) to determine whether this is a one-year aberration or whether a new trend may have begun. **In light of this possibility, NESDEC urges all school districts to have updated enrollment forecasts developed by NESDEC each October.** This service is available at no cost to affiliated school districts.

USING THIS INFORMATION ELECTRONICALLY

If you would like to extract the information contained in this report for your own documents or presentations, you can use screenshots, which can be inserted into PowerPoint slides, Word documents, etc. Because screenshots create graphics, the image is not editable. Please feel free to contact us if you need assistance in this matter, by phone (508-481-9444) or by email (ep@nesdec.org).